	PO Box 299	Version	Author	Reviewed	Reference
	Oberon NSW	<b>A - Rev 1</b>	SM		<b>SOP-006</b>
	2787	23 November 2011			
	ABN 98 107 506 208	<b>Clipping Points - Yard Operation</b>			

#### Document Status

Version	Date	Revision	Prepared	Reviewed	Approved
A	23/11/12	Rev.0	SM (Ian Davis)	Mgmnt Comm	24/11/12

#### Revision Record

Revision	Date Issued:	Description of change:
1	24/11/12	Minor changes

## Introduction

Point clips are used to secure points in the normal or reverse position. They are also used to secure expansion joints for wrong running-direction movements.

Facing points on running lines must be locked if:

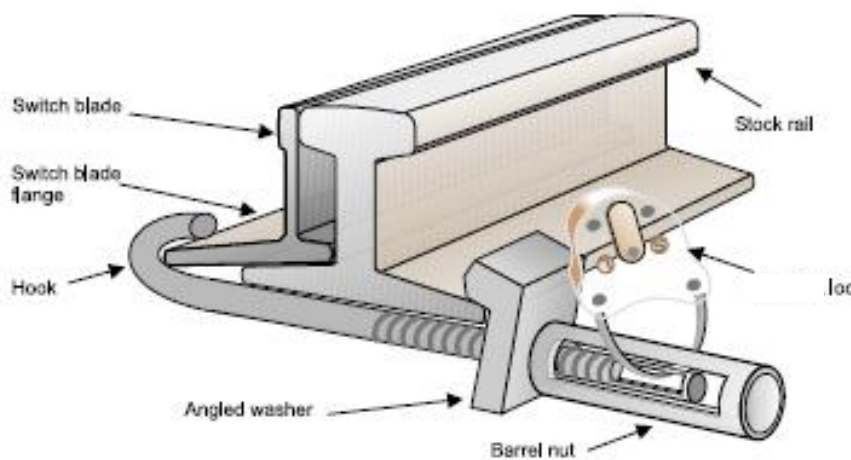
- you cannot be sure that the points will remain in the correct position, or
- there is an instruction at the points to clip and lock them, or

- the points are included in instructions in the controlling signal box.

A lock is used to lock point clips. Point clips are kept in traffic huts and various equipment cabinets.

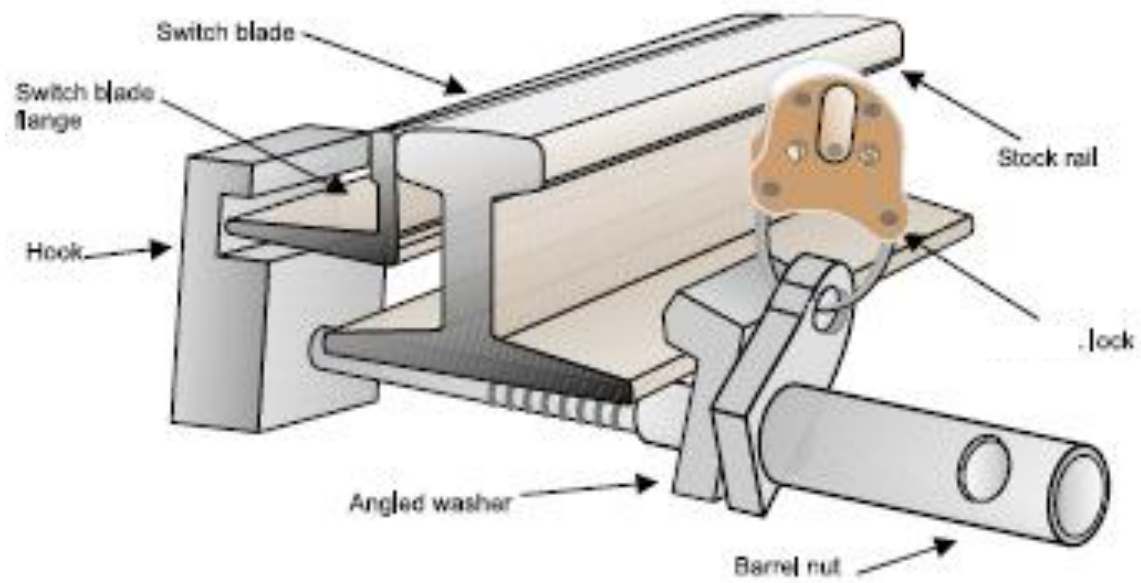
### **Using point clips**

1. Use standard point clips for standard points. Standard points have a switch blade and stock rail of similar depth. The standard point clip has a simple hook for the switch blade flange.



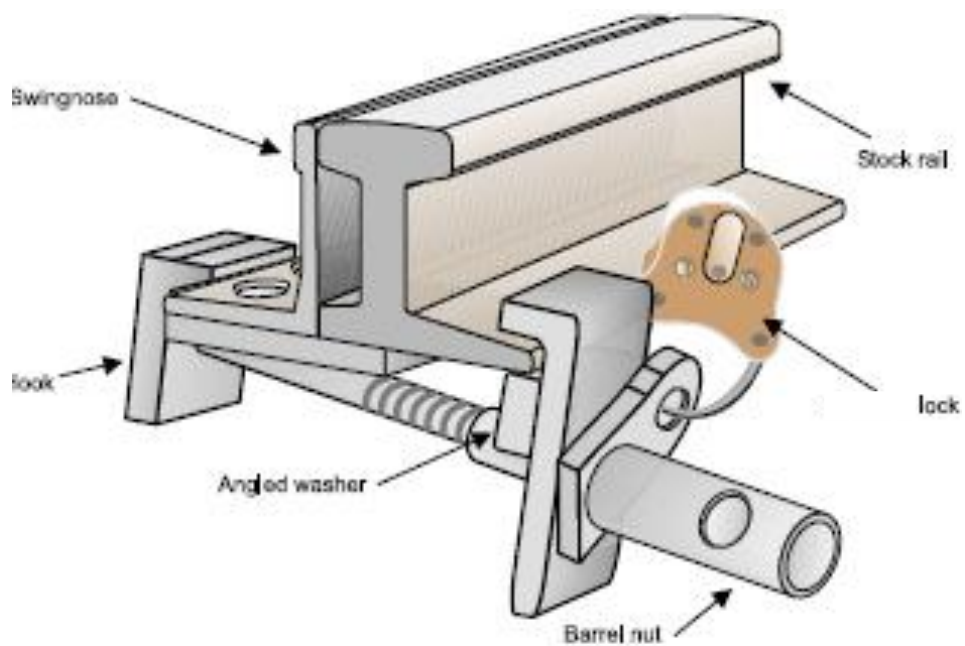
Fitted Standard Point Clip

2. Use tangential point clips for tangential points. Tangential points have a shallower switch blade. The tangential point clip has a stepped hook to suit the shallower switch blade.

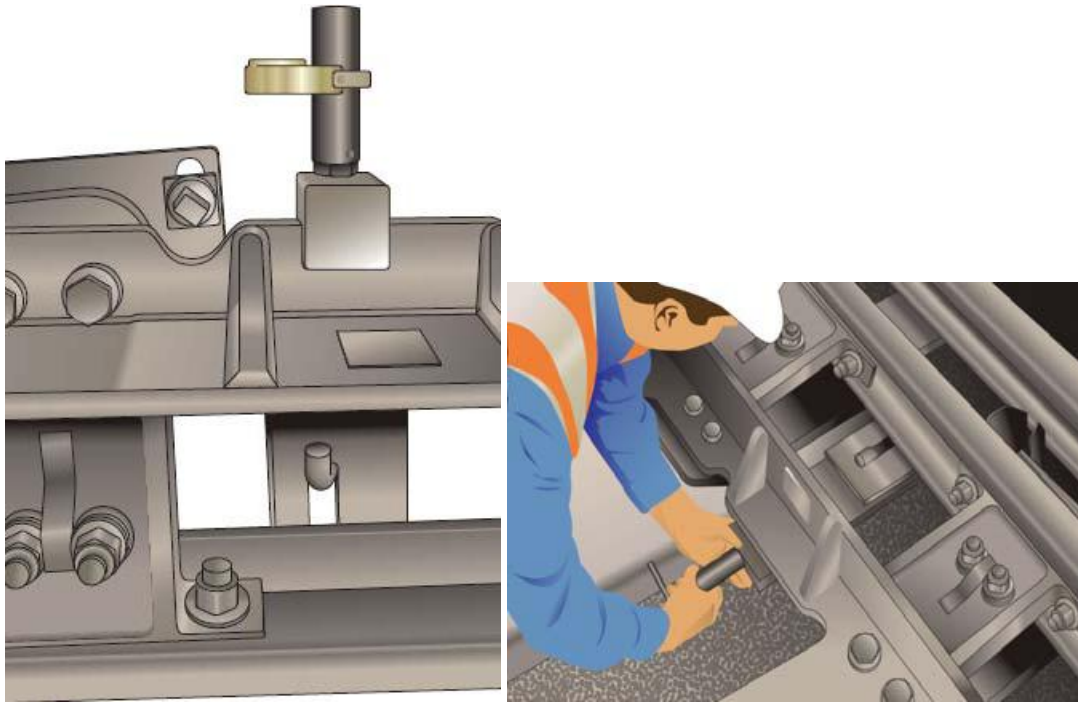


Fitted tangential point clip

3. Use the point clip provided in the equipment cabinet for the swingnose used in some points.



Point clip fitted to the swingnose



Point clip fitted to the swingnose of VAE Points.

This type of points uses a normal point clip fitted to a plate under the movable swingnose of the points.

### **Fitting point clips**

#### **Qualified Worker**

1. Make sure that you can do the work safely.
2. Make sure that the points are in the correct position, and that the blade is tightly against the stock rail.
3. Fit the point clip to the underside of the switch blade and stock rail, as close as possible to the tapered end of the switch blade, and between sleepers.

**NOTE** Install the point clip for standard and tangential points so that the barrel nut of the clip is outside the four-foot.

4. Hand-tighten the barrel nut, making sure the angled washer is fitted as shown in the Figures.
5. Fit and lock a lock.