



OTPR 707

Clipping Points

Applicability

NSW

SMS

Publication Requirement

Internal Only

Document Status

Issue/Revision #	Effective from
1.0	1 January 2019

Introduction

Point clips are used to *secure* points in the normal or reverse position. They are also used to secure expansion joints for *wrong running-direction* movements.

Facing points on *running lines* must be locked if:

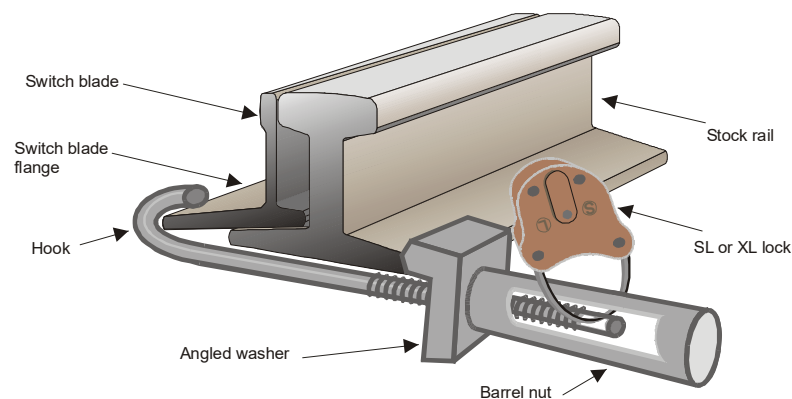
- you cannot be sure that the points will remain in the correct position, or
- there is an instruction at the points to clip and lock them, or
- the points are included in instructions in the controlling signal box.

An SL lock is used to lock point clips. Point clips are kept in signal boxes, traffic huts and various equipment cabinets.

Using point clips

1. Use standard point clips for standard points. Standard points have a switch blade and stock rail of similar depth. The standard point clip has a simple hook for the switch blade flange.

Figure OTPR 707-1



Fitted standard point clip

Fitting point clips

Qualified Worker

1. Make sure that you can do the work safely.
2. Make sure that the points are in the correct position, and that the blade is tightly against the stock rail.
3. Fit the point clip to the underside of the switch blade and stock rail, as close as possible to the tapered end of the switch blade, and between sleepers.



Install the point clip for standard points so that the barrel nut of the clip is outside the four-foot.

4. Hand-tighten the barrel nut, making sure the angled washer is fitted as shown in the Figures.
5. Fit and lock an SL lock.

Related OTHR Network Procedures

NIL

Effective Date

1 January 2019